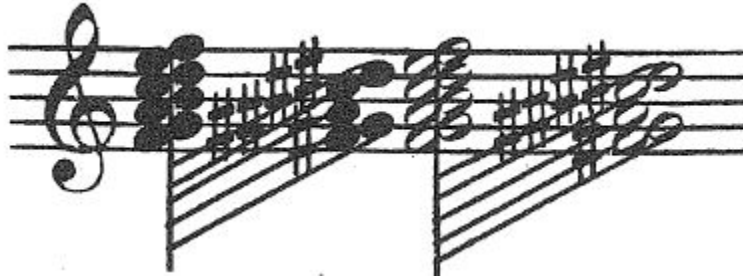


Extended piano techniques called for unusual notational solutions. For Cowell's famed tone clusters, writing all the notes to be played would present a significant problem in traditional notation as illustrated here:



To avoid a cumbersome score, Cowell devised – at age 15! – the following solution:



Likewise, Cowell similarly indicated clusters that comprised only natural or only black key notes.



For the string techniques in *The Banshee*, 12 circled letters to indicate a particular technique such as sweeping from the lowest string in the instrument to a particular note indicated in traditional notation. Each letter indicated a sweep with flesh or nail, plucking, or some combination thereof. This image comes from the piano score for this work.

